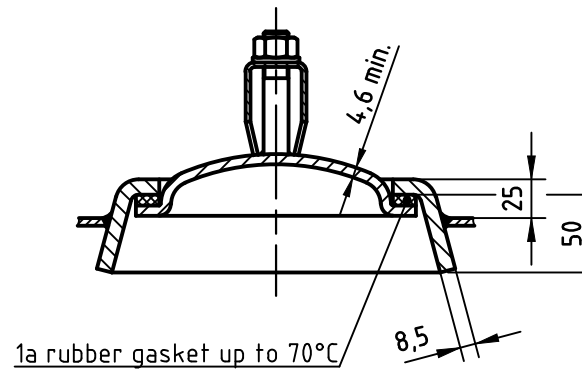
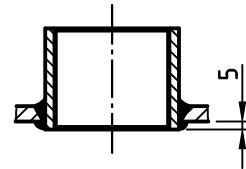


OAB 51 - handhole lock 100/150
tested components

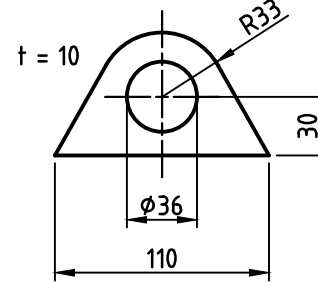


socket welding

drain and plug socket
inside flush

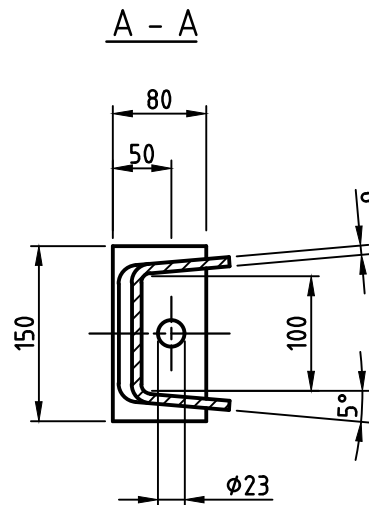
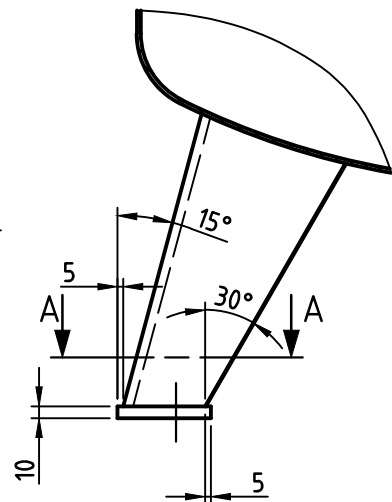
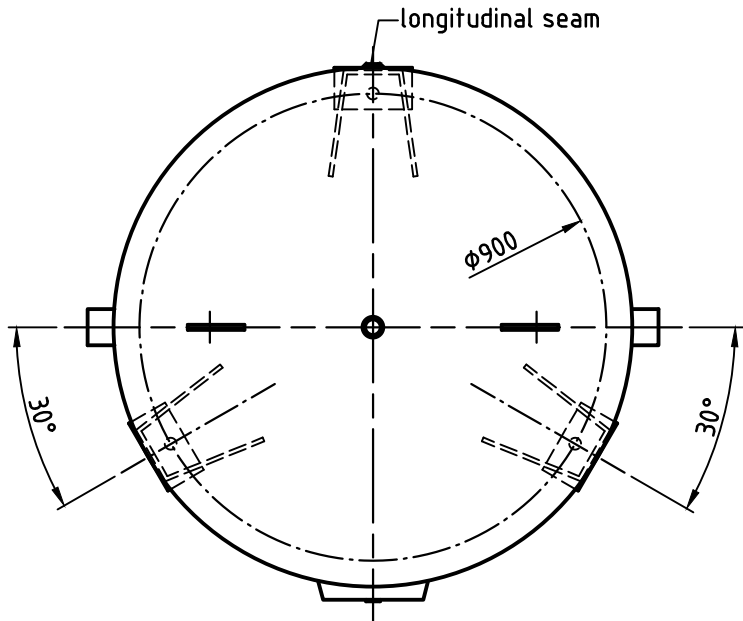


carrier eye

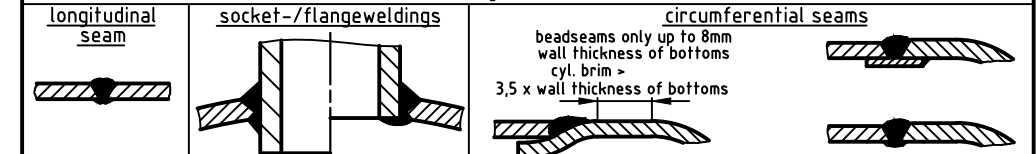


footings turned in diagramme

Detail X



SEAMS (unless otherwise indicated on drawing):



pressure variation :

pressure swing 0-16 bar max. operations 1.000

infinite operation of pressure swing within 20% of 16 bar

operational characteristics / calculation characteristics :

volume V (litre)	: 1500
max. working pressure PS (bar)	: 16
test pressure PT (bar)	: 22,88
min. working temp. TS (°C)	: -20
max. working temp. TS (°C)	: 50
fluid	: compressed air/nitrogen (fluid group 2)
location	: inside and outside building possible

coating :

inside : raw

outside : primed (if customer wishes lacquered)

manufacturing and testing

acc. to PED 2014 / 68 / EU - AD 2000

conformity benchmark :

fluid group : 2
diagram : 2

categorie : IV
module : H1

scale:	1:15
our no.:	-
order no.:	-
used for:	M+B Standardvessel
weight:	ca.480 kg
sheet:	1
of sheet:	1
date of plot:	17.06.2015
file:	ENG-010736

date		name	
compl.	17.06.2015	CW	
appr.	17.06.2015	SW	
follow protection mark acc. DIN 34			

description:

pressure vessel upright
1500 l 16 bar

drawing no.:

MB 020103-2.1500G/E

drawing no. of design inspection:

MB 020103-2

revision:

A

date of revision:

17.06.2015

revision only on CAD